



Initial enquiries to be directed to:
Manager – My Life, My Future
Email:
Manager_MyLifeMyFuture@nadrasca.com.au
Phone: (03) 9873 1111

**Nadrasca Head Office and
Nadrasca Industry Premises**

52-62 Rooks Road
Nunawading Victoria 3131

Printed by Nadrasca Commercial Printing

**MY LIFE,
MY FUTURE**
Lead, Be Inspired, Be Empowered

*A transitional model offering
young people the opportunity
to prepare for adult life*

**Our Purpose is to Establish and
Develop a Range of Services for
People with a Disability**

Nadrasca

Nadrasca was established in 1967, as a community-based Not-For-Profit Disability Service organisation and today provides support services to over 350 people living with a disability, across 22 locations in the Eastern suburbs of Melbourne.

The Nadrasca Values are: *Trustworthy, Caring, Respectful and Supportive.*

My Life, My Future

'My Life, My Future' provides an opportunity for young people leaving school to:

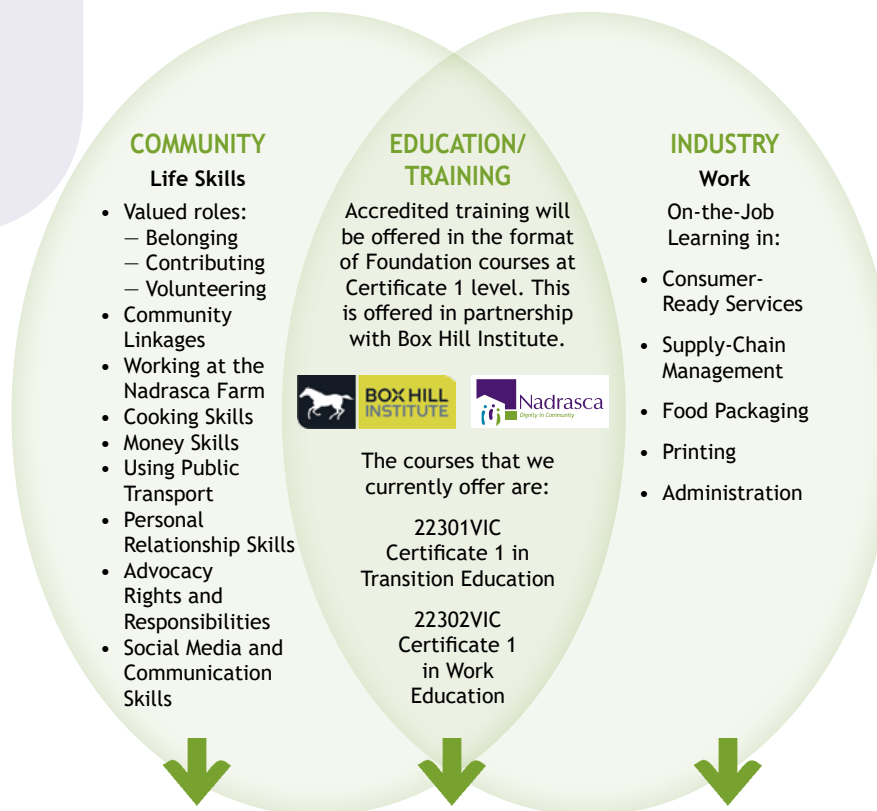
- Continue learning and develop a vision for their future
- Identify further opportunities for growth and development through life experiences
- Have valued roles such as volunteering and contributing in their community
- Access further training and education
- Enhance their Life Skills
- Gain work experiences which could lead to employment

Goals

- Each person is a unique individual; therefore each goal will differ from person to person.
- We will be guided by what each individual/family would like to achieve during this transitional period.
- Each person will have an individual plan to achieve their goals in a structured, creative and supportive environment.

The Programme Components

There are essentially three components of this programme, with measurable outcomes.



OUTCOMES

- Having valued and contributing roles in the community
- Having a presence and participation as a citizen
- Clear vision of future pathways and options
- Further structured learning
- Open or Supported Employment opportunities

Eligibility Criteria

To participate in 'My Life, My Future' you need to be:

- A Participant with the National Disability Insurance Scheme (NDIS) or
- 18 years and over and registered for funding with the Department of Health & Human Services (DHHS)

If you are unsure about your status, please contact us for clarification.

Fees

A fee for consumables will be charged by Nadrasca, based on the Plan chosen by the individual.

A fee for transport (where provided) will be charged, based on the individual's NDIS Service Agreement with Nadrasca.

All fees are reviewed annually, in line with the Consumer Price Index.

Transport

We are situated near the Nunawading Railway and connecting bus services.

Hours of Operation

The hours of operation will depend on each individual's plans and goals.

For further information about Nadrasca visit: www.nadrasca.com.au